

6th Sense

6th Sense optimizes customers' processes by connecting machines, systems and people using automation, information management and system integration.

With 6th Sense, our customers can achieve production gains and lower operating costs.



Epiroc leads the charge on battery power

With electric vehicles instead of diesel-powered machines, it is possible to eliminate emissions from diesel engines and thereby improve the working environment for personnel. In 2016, we launched our first battery-electric machines and we aim to offer a complete fleet of underground mining equipment as battery-electric versions by 2025.



United in performance. Inspired by innovation.

Performance unites us, innovation inspires us and commitment drives us to keep moving forward. Count on Epiroc to deliver the solutions you need to succeed today and the technology to lead tomorrow. epiroc.com



Our customers and applications

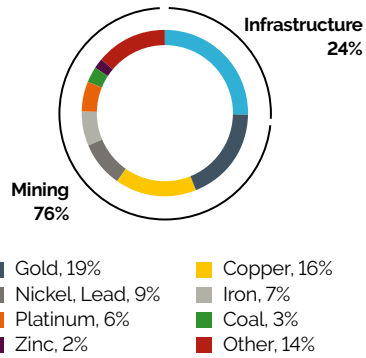
Mining

The mining industry represents approximately 76% of our business. Applications include production and development work for both underground and open-pit mines, and for mineral exploration.

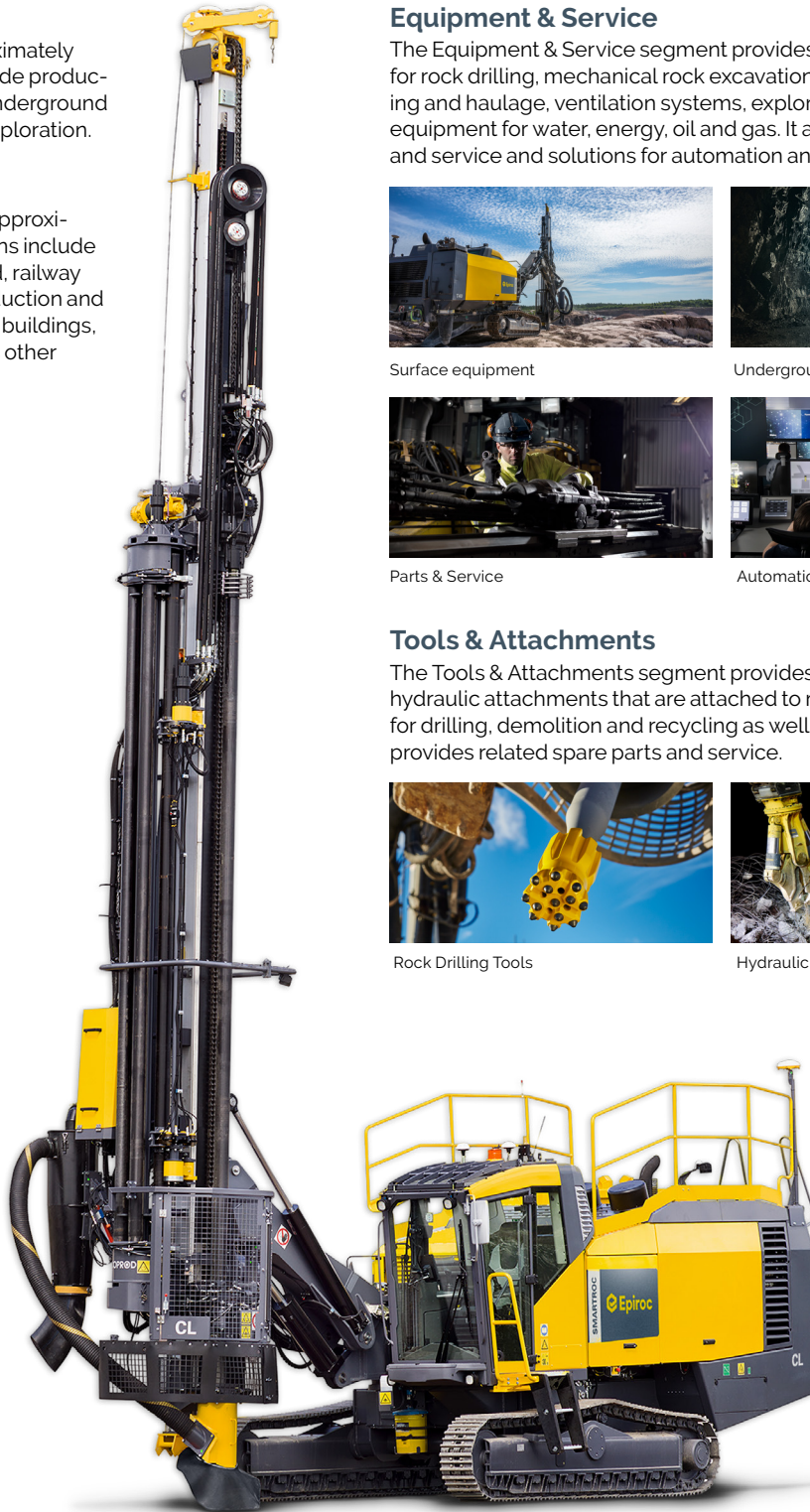
Infrastructure

Infrastructure applications represent approximately 24% of our business. Applications include blasthole drilling for tunneling, for road, railway and dam construction, aggregate production and other construction work, demolition of buildings, bridges and industrial plants as well as other drilling applications.

Exposure to mining (by minerals) and infrastructure



Estimated exposure based on orders received in 2019



Our segments

Equipment & Service

The Equipment & Service segment provides equipment and solutions for rock drilling, mechanical rock excavation, rock reinforcement, loading and haulage, ventilation systems, exploration drilling, drilling equipment for water, energy, oil and gas. It also provides related parts and service and solutions for automation and interoperability.



Surface equipment



Underground equipment



Parts & Service



Automation and digital solutions

Tools & Attachments

The Tools & Attachments segment provides rock drilling tools and hydraulic attachments that are attached to machines and used mainly for drilling, demolition and recycling as well as rock excavation. It also provides related spare parts and service.

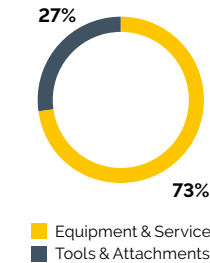


Rock Drilling Tools



Hydraulic Attachment Tools

Revenues split by segment



Epiroc facts in brief 2019/2020



This is Epiroc

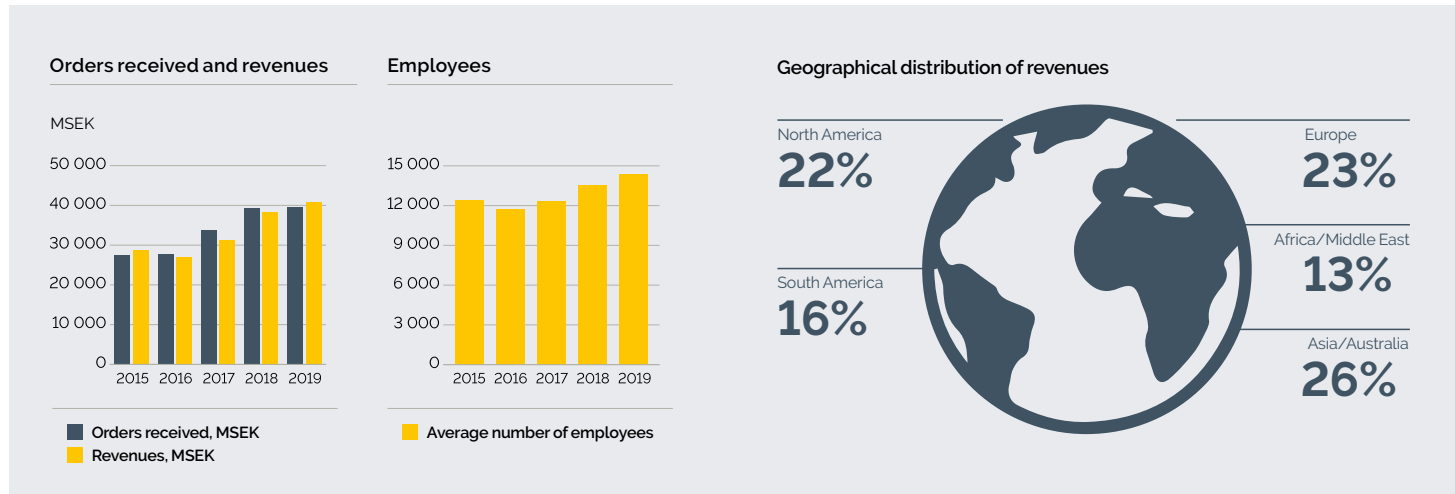
Epiroc is a **leading global productivity partner** for the mining and infrastructure industries. With ground-breaking technology, we develop and produce **innovative, safe and sustainable** drill rigs, rock excavation and construction equipment, and tools. We also provide world-class **service** and solutions for automation and interoperability.

We have a strong operating model characterized by focus on **innovation**, a strong and **resilient** services business, and an **agile** and **decentralized** operational setup. Our world is changing and our ambition is to be the leader in automation, interoperability and fossil-free operations.

We are a **147-year old start-up** – a dynamic new company, but with proven expertise and experience. Epiroc means at or on rock, coming from Greek and Latin roots. It reflects our core business, our proximity to customers and the strength of our partnerships.

Epiroc is based in Stockholm, Sweden, had revenues of **SEK 41 billion** in 2019, and has more than **14 000 passionate employees** supporting and collaborating with customers in more than **150 countries**. Learn more at www.epirocgroup.com.

Epiroc was part of the Atlas Copco Group, founded in 1873, until June 18, 2018, when Epiroc was distributed to the shareholders of Atlas Copco and listed on Nasdaq Stockholm



Our core values



Innovation

We are creative, bold and open minded, with the imagination to develop new ideas and the initiative to bring them to market.



Commitment

We are committed to meet and exceed expectations by staying connected to our customers, technology and the environment.



Collaboration

We believe in close cooperation with customers, colleagues, partners and other stakeholders.

Our approach to sustainability and corporate responsibility

- Our commitment to growth and profitability also takes into account the broader economic, environmental and social impact of our operations.
- We strive to be a good and reliable corporate citizen, observing the spirit as well as the letter of the law of the countries in which we operate. As a part of this, all products and processes shall be evaluated from a quality, safety, health and environmental perspective.
- Our products are developed with the aim of meeting our customers' increased demand for solutions that reduce their environmental footprints and improve the safety and health conditions for employees. By helping our customers reduce sustainability risks and environmental footprints in a cost-effective way, we can together meet the demand of today without compromising the future needs of tomorrow's generations.
- We are committed to addressing and integrating human rights across our business operations in accordance with the UN Guiding Principles on Business and Human Rights.
- We will formulate 2030 targets aligned with the UN Sustainable Development Goals in 2020 to reflect our ambitions to make a difference.
- We recognize Water for All as our main community engagement project.



People and leadership

Our employees are hardworking, curious, passionate and committed. A talented workforce is essential to execute our strategy. We encourage our employees to take ownership of their own career and development with the support from their leaders and take on new challenges and continuously develop. We have a long term view on recruitment to ensure we have the right expertise and leadership competences. Epiroc sees diversity as key to grow fresh ideas and innovative solutions.



Our strengths

A unique combination of strengths defines Epiroc and is the foundation to remain successful in a competitive global market within the mining and infrastructure industry.

We are a leading productivity partner in attractive niches

We offer productivity solutions for hard rock applications and operate in selected attractive niches of the global mining and infrastructure equipment and services markets. We are always close to our customers with sales in more than 150 countries.

We have a high proportion of recurring business

Aftermarket is an integral part of our offering to safeguard safety and high productivity for our customers. We supply spare parts and consumables, professional services, support solutions and training.

We drive the future in intelligent mining and infrastructure

We believe that technologies such as automation, interoperability and electrification are the future. Our passionate people drive, in close collaboration with customers, continuous innovation to provide safe and sustainable solutions that lead to higher productivity and lower costs for our customers.

We have a strong and proven operating model

We have a focused and decentralized business with the ability to adapt quickly and effectively to changes in demand. Our resilience builds on a high degree of direct sales, a strong services business and a flexible manufacturing philosophy.

We create value for our stakeholders

We create value for our stakeholders by conducting a responsible business while aiming to achieve sustainable profitable growth. A responsible business is fundamental in our customer offering and helps us attract and keep motivated employees.